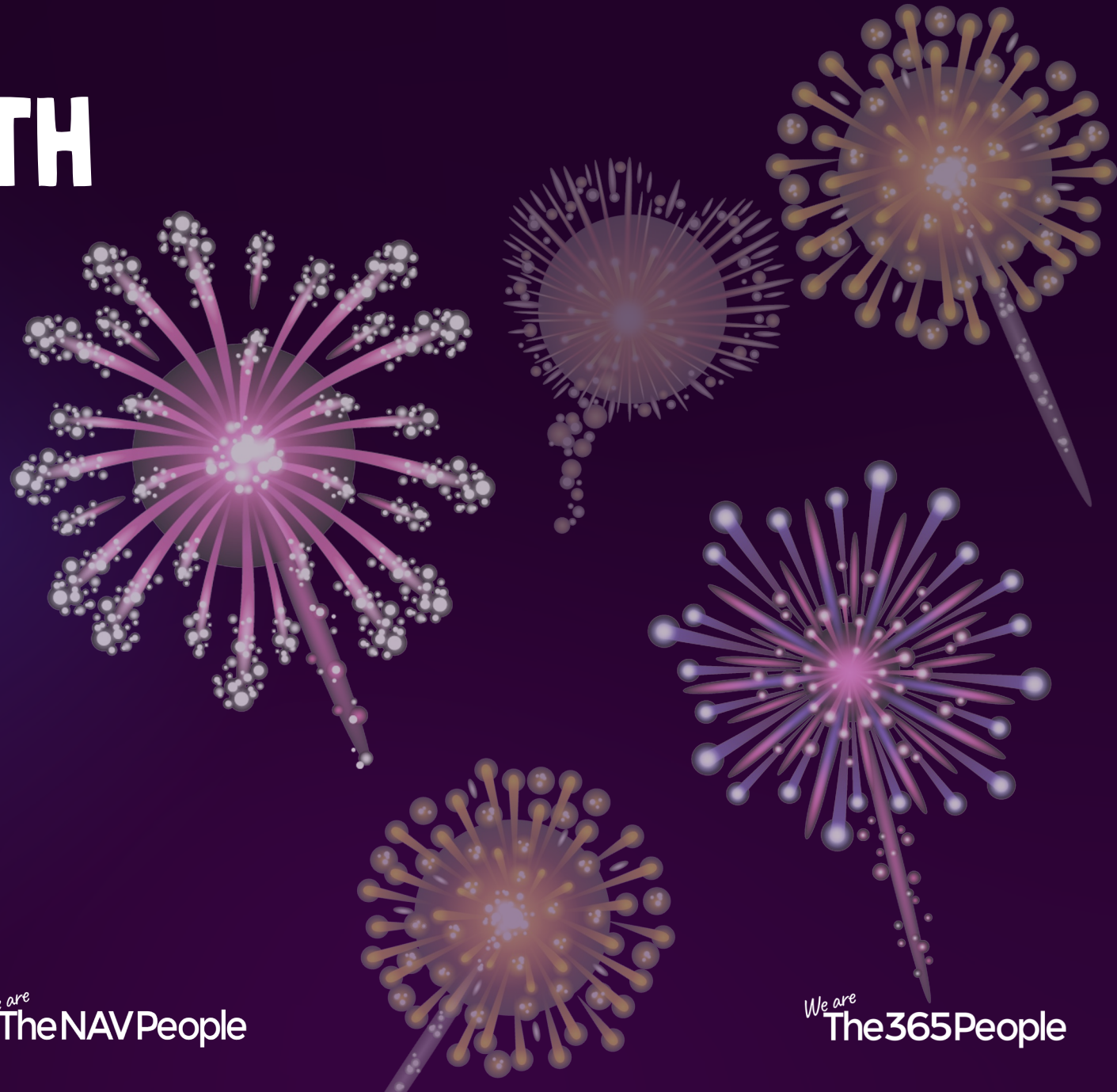


# INTEGRATION WITH LOGIC AND POWTOMATION IN AZURE

*Ian Humphries*  
*Andrei Popescu*



# INTRODUCTION

*We are*  
The Power People

*We are*  
The NAV People

*We are*  
The 365 People

# SESSION EXPECTATIONS



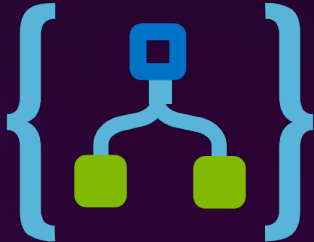
# Power Automate



# Power Automate Desktop



# Azure Logic Apps



# Azure Integration Services



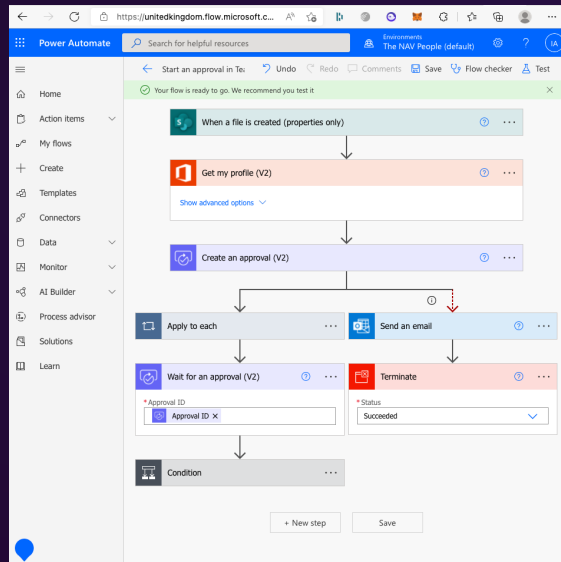
**POWER  
AUTOMATE**



# POWER AUTOMATE EXAMPLES

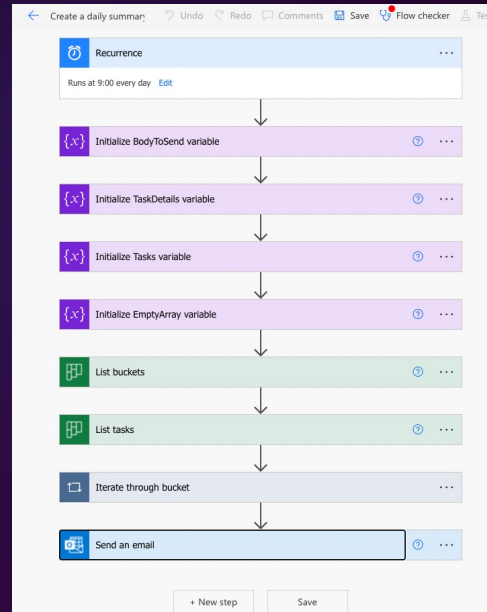
## SharePoint file approval

*Start an approval process when a file is added to SharePoint*



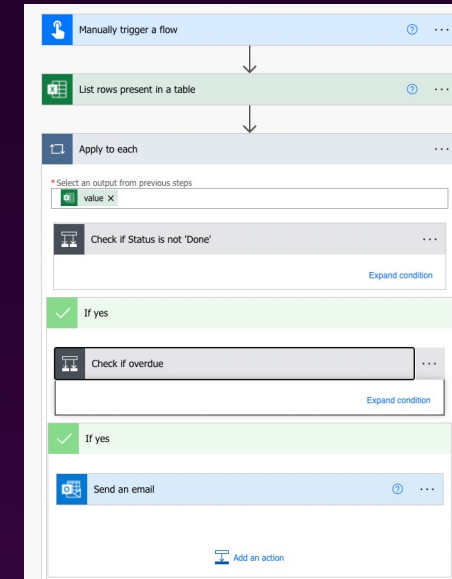
## Create a Planner Daily Summary

*Create daily summary of Planner tasks by Bucket*



## Send E-Mail with task deadlines.

*Check task deadlines and send email for overdue tasks.*



# DEMO TIME



*We are*  
The Power People

*We are*  
The NAV People

*We are*  
The 365 People

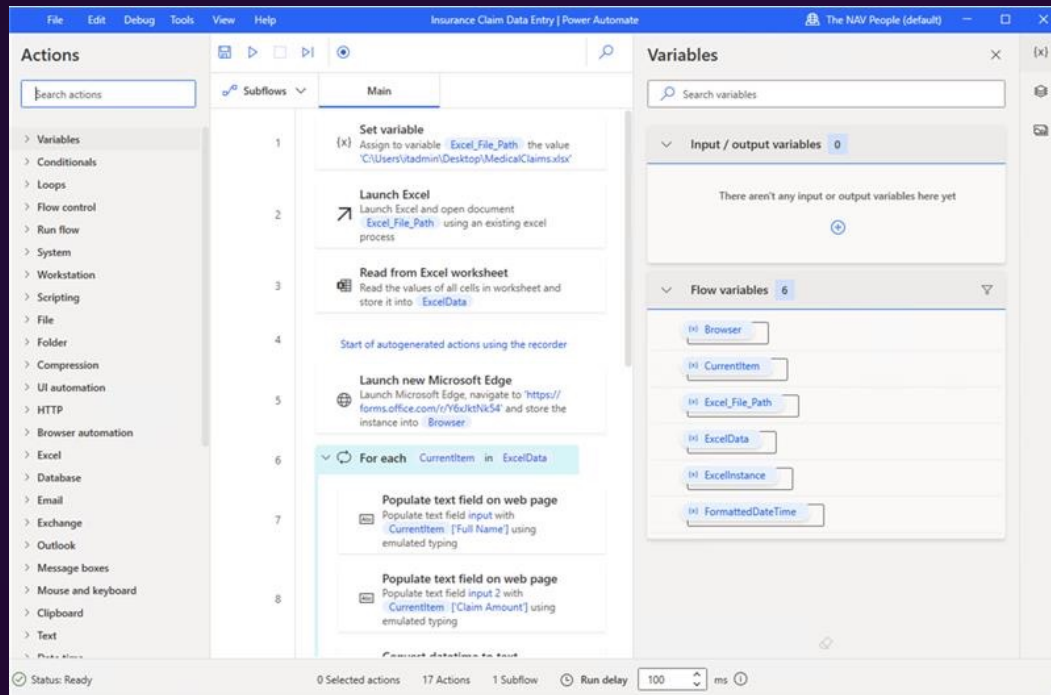
# POWER AUTOMATE DESKTOP



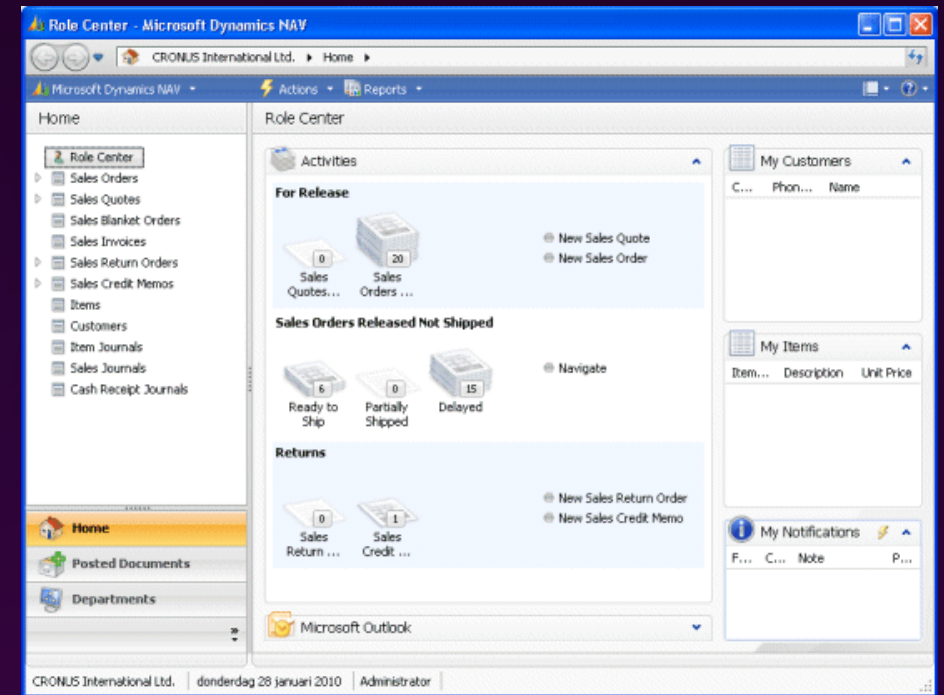


# POWER AUTOMATE DESKTOP EXAMPLES

Copy Data Between Systems  
*Fill in an Office Form from Excel*



Copy data into/from  
Legacy Systems  
without API's



# DEMO TIME

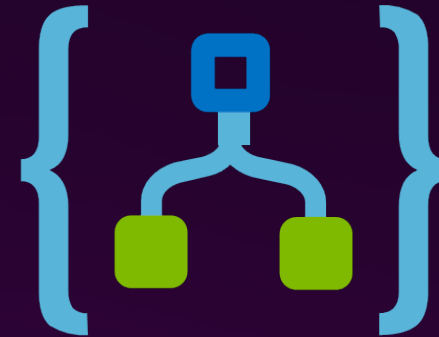


*We are*  
The Power People

*We are*  
The NAV People

*We are*  
The 365 People

# AZURE LOGIC APPS



# LOGIC APP CLIENTS

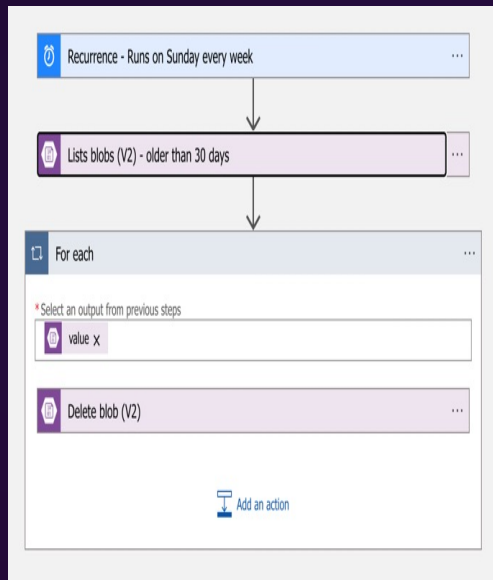
The screenshot shows the Microsoft Azure Logic Apps Designer interface. The top navigation bar includes 'Microsoft Azure', a search bar, and various utility icons. The main workspace displays a flowchart with four steps: 1. 'When a message is received in a topic subscription (auto-complete)', 2. 'Parse JSON', 3. 'Update record (V3) (Preview)', and 4. 'Send an email (V2)'. The 'Update record (V3) (Preview)' step is expanded, showing configuration fields for 'Environment name' (PRODUCTION), 'Company name' (CRONUS UK Demo Ltd.), 'API category' (The365People/general/v1.0), 'Table name' (customerLedgerEntries), and 'Row id' (Entry No.).

The screenshot shows Visual Studio Code with a Logic App workflow. The left sidebar displays the 'LOGIC APPS' tree structure. The main editor shows a workflow diagram with three steps: 'When a new item is created', 'Get my profile', and 'Send email'. The 'Send email' step is expanded, showing configuration for 'To' (Email), 'Subject' (New item added), and 'Body' (Hi @ Given name). The right sidebar shows the JSON code for the workflow, including the 'actions' section for 'get\_my\_profile' and 'send\_email'. The terminal at the bottom shows the output of the workflow execution.

# AZURE LOGIC APPS EXAMPLES

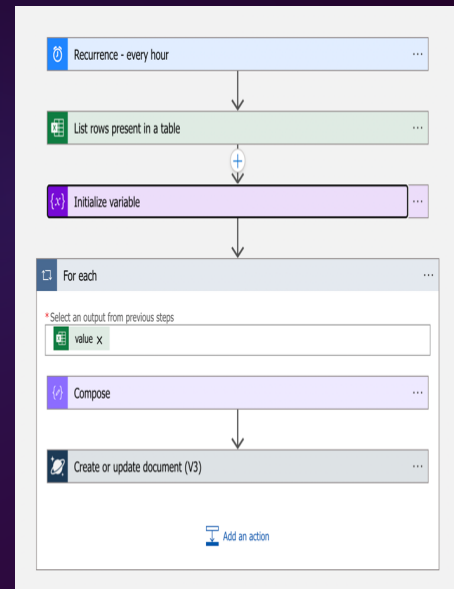
## Delete Old BLOB Files

*Each week clear specific files from a BLOB container that are older than 30 days.*



## Create CosmosDB records

*from various sources  
Indexing Excel files*



## Send custom Alerts or Reports.

*Check daily for Azure VM's that don't have backups enabled or a backup policy assigned*

Azure VM's with no backups enabled - 12 January 2022

AA © Azure Automation <Azure.Automation@thenavpeople.co.uk>  
To: ● Andrei Popescu; Jamie.Elliott@thenavpeople.co.uk

RESOURCEGROUPNAME	VMNAME	SUBSCRIPTIONNAME
365P-GURU	365P-GURU-SQLR	VEDBAEK LTD. PRODUCTION EA
365P-GURU	P365-GURU-2018R	VEDBAEK LTD. PRODUCTION EA
AP-WIN-PC	AP-WIN-PC	VEDBAEK LTD. PRODUCTION EA
		VEDBAEK LTD. PRODUCTION EA
		VEDBAEK LTD. PRODUCTION EA
		VEDBAEK LTD. PRODUCTION EA
		VEDBAEK LTD. PRODUCTION EA
		VEDBAEK LTD. PRODUCTION EA
		VEDBAEK LTD. PRODUCTION EA
		VEDBAEK LTD. PRODUCTION EA
		VEDBAEK LTD. PRODUCTION EA
		VEDBAEK LTD. PRODUCTION EA
		VEDBAEK LTD. PRODUCTION EA
		VEDBAEK LTD. PRODUCTION EA
		VEDBAEK LTD. PRODUCTION EA
		VEDBAEK LTD. PRODUCTION EA
		VEDBAEK LTD. PRODUCTION EA
		VEDBAEK LTD. PRODUCTION EA
		VEDBAEK LTD. PRODUCTION EA
		VEDBAEK LTD. PRODUCTION EA
		VEDBAEK LTD. PRODUCTION EA

# DEMO TIME

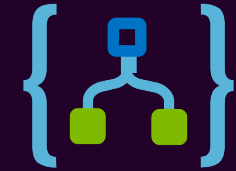


*We are*  
The Power People

*We are*  
The NAV People

*We are*  
The 365 People

# KEY DIFFERENTIATORS



Focus

End Users and Makers  
in O365

IT Pros, Developers in  
Azure

Licensing Model\*

Per-User License in  
O365

Consumption-Based or  
Fixed Price via Azure  
Subscription

Flow Creation

Web Based Designer,  
Mobile and Desktop

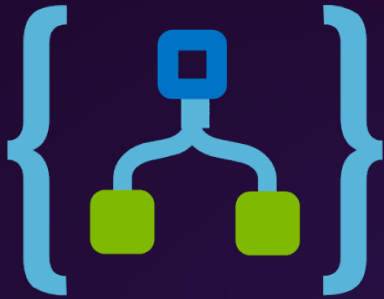
Visual Studio, JSON  
Definition(Code) or Web  
Designer

# AZURE INTEGRATION SERVICES





# AZURE INTEGRATION SERVICES



Azure Logic Apps



Azure Service Bus



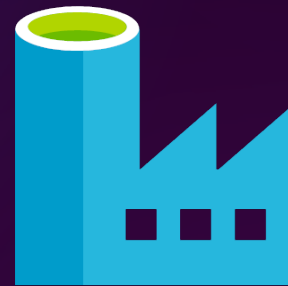
API Management



Event Grid



Azure Functions

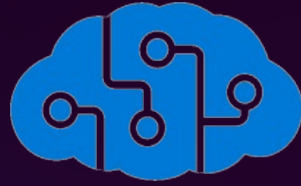


Data Factory

# REAL LIFE SCENARIO – ASKNORA



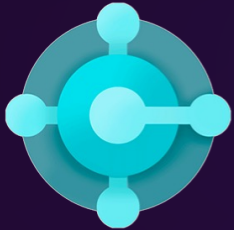
Azure Logic Apps



Azure Cognitive Services



Azure Service Bus



Azure Bot Framework



Azure Functions



Azure Cosmos Database



Dataverse

# QUESTIONS



*We are*  
The Power People

*We are*  
The NAV People

*We are*  
The 365 People

**DON'T FORGET  
TO RATE THIS  
SESSION IN THE  
USER DAY APP**

