

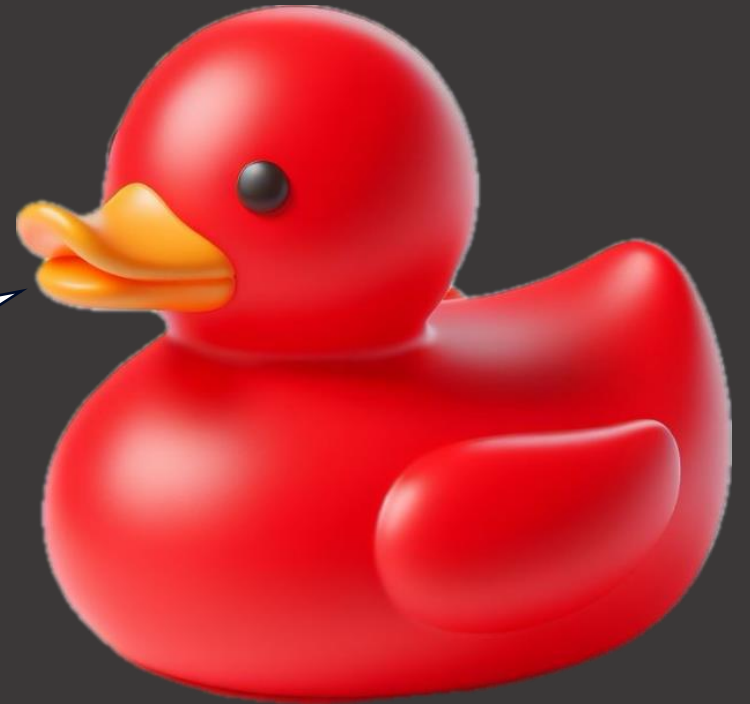


# Stop ducking around!

**Upgrade to Business Central Online now!**

# Why are we at the upgrading session?

**Any first-  
time little  
ducks?**



Old version of  
NAV or BC?



Unsure about  
the benefits  
of upgrading?

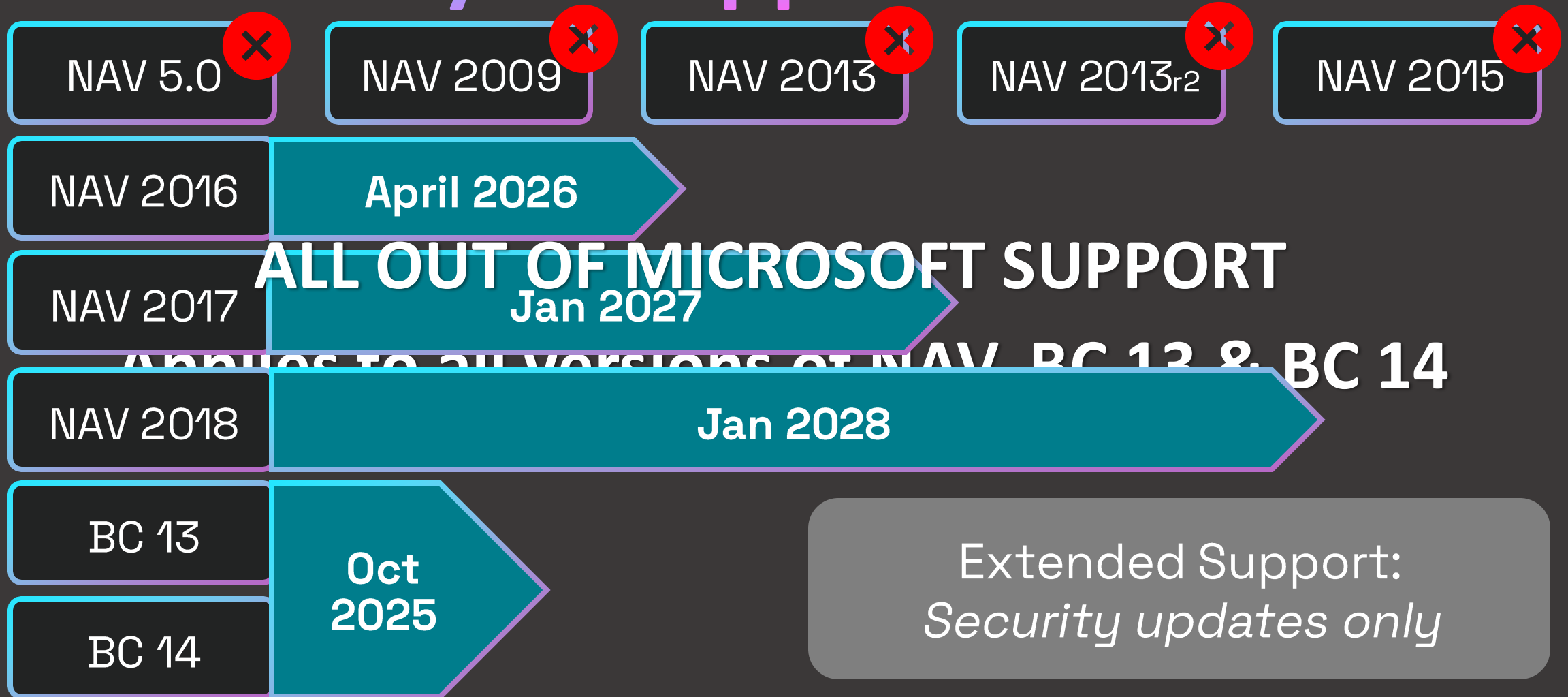


Looking for advice  
on upgrading to  
BC Online?



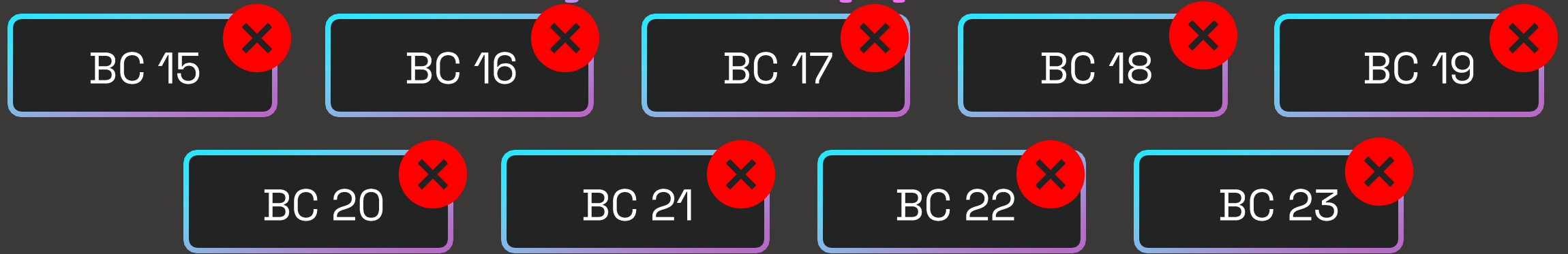
**Are you on a supported version of  
NAV or BC?**

# Fixed Lifecycle Support





# Modern Lifecycle Support



**ALL OUT OF MICROSOFT SUPPORT**

**Applies to all versions since  
Business Central 15  
(2019 Wave 2 - Oct 2019)**

# Modern Lifecycle Support

BC 24

Oct 2025

BC 25

Apr 2026

BC 26

Oct 2025

Oct 2026

6 months of new features, bug and regulatory fixes

12 months of bug fixes regulatory fixes

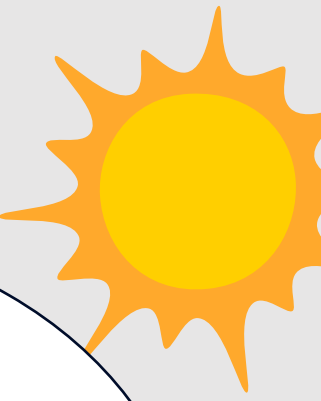
Support!



**NAV up  
to  
2013r2**

**NAV from  
2015, and  
BC 13 &  
14**

**15  
and  
later**



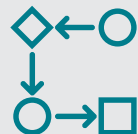




# Clean Start



**New  
Business  
Central**



**Your  
processes**



**New  
functionality**



**Data  
migration**



**Evergreen!**

# Evergreen First Step



**Make code  
cloud  
compliant**



**Migrate to  
Cloud**



**Evergreen!**

# Upgrade Factory



**Upgrade to  
BC14  
C/AL to AL**



**Convert  
Database**



**Migrate to  
BC Online**



**Evergreen!**

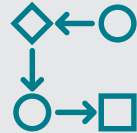
**14**

# Clean Start

## NAV from



**New  
Business  
Central**



**Your  
processes**



**New  
functionality**



**Data  
migration**



**Evergreen!**





Evergreen

# Don't quack under the pressure!

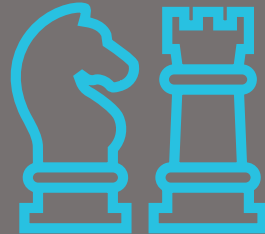
**We can carry out an Upgrade Assessment!**

# Upgrade Assessment

## Discovery Workshop



## Upgrade Strategy & Objectives



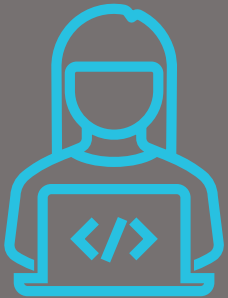
- Your version of NAV/BC
- Reason for looking to upgrade & expectations
- Solution with existing solution
- Why BC online is different
- Our recommended approach



# Evergreen FirstStep

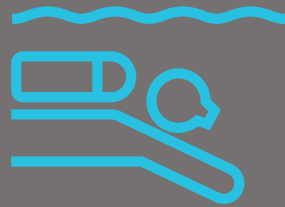


## Detailed Code Review



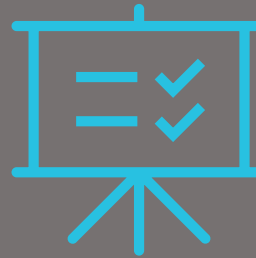
- P
- V
- R
- C
- Review database size

## Deep Dive Workshops



- Lic
- Dat
- Inte
- Co
- Cop
- Reporting & Power BI

## Upgrade Proposal



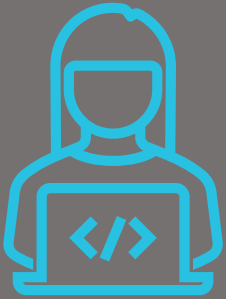
- Full Cost estimate
- Project plan
- Licensing
- Payback Assessment

- M365 integration
- New Functionality
- Review database size

# Upgrade Factory

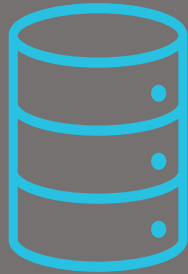


## Detailed Code Review



- Review
- Review
- Run
- Check

## Database Review



- Review database size
- Check large tables
- File Attachments
- Staging tables
- Change Log

## Deep Dive Workshops



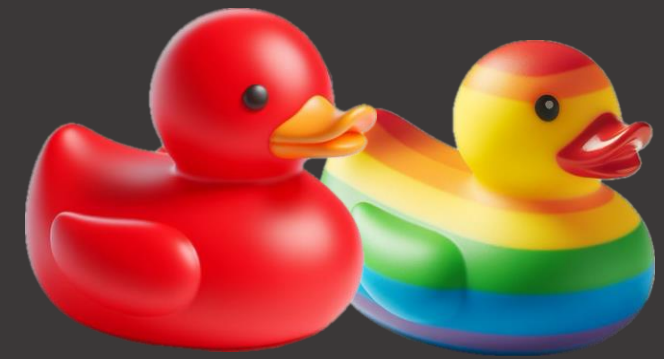
- Lic
- Da
- Int
- Co
- Reporting & Power BI
- M365 integration
- New Functionality
- Review database size

## Upgrade Proposal

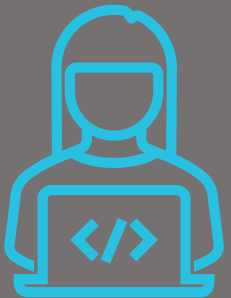


- Full Cost estimate
- Project plan
- Licensing
- Payback Assessment

# Clean Start

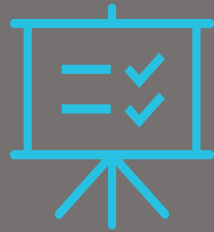


## Discovery Workshop

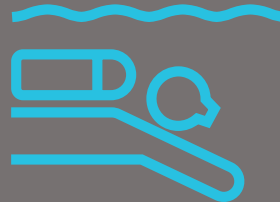


- High
- Process
- Configuration
- Repository
- Historic data
- Data migration

## Initial Proposal



## Deep Dive Workshops



## Upgrade Proposal



- License
- Data
- Integration
- Cost
- Full Cost estimate
- Project plan
- Licensing
- Payback Assessment
- Reporting & Power BI
- M365 integration
- New Functionality
- Review database size

# Frequently asked Quack-tions



“ **Will Business Central Online  
performance match my  
on-prem solution?** ”



# Will Business Central Online performance match my on-prem solution?



Data



Users



Web  
Service



Job  
Queue



Scalability



Per User



“ **We can remove lots of the code we no longer use and that will simplify the upgrade** ”

# **We can remove lots of the code we no longer use and that will simplify the upgrade**

Layers of customisation can be difficult to remove

It is easier to remove code in AL

Consider a Clean Start upgrade strategy

“ **We want to keep all our customisations AND make lots of changes to our processes** ”

# **We want to keep all our customisations AND make lots of changes to our processes**

Get to BC  
Online first,  
then make  
continuous  
improvements

Day 1 benefits:  
Copilot, Power  
BI reporting  
and M365  
integrations

New features  
every 6  
months!

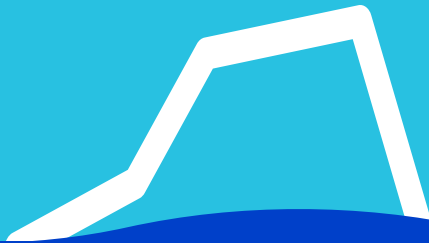
“

**BC Online will be very expensive**

”



**On -Prem**



**SaaS**

**Licensing  
Costs**





# On -Prem

**On -Prem**

Hosting costs  
Security  
IT support  
Backups & DR  
Upgrades



**SaaS**

Licensing  
Costs

Bi-Annual  
Updates

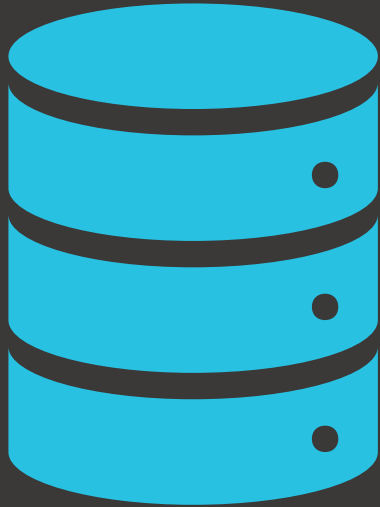




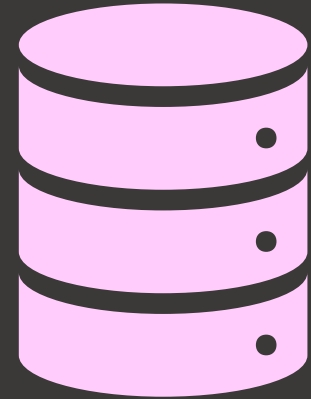
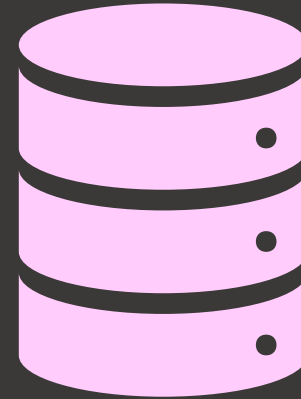
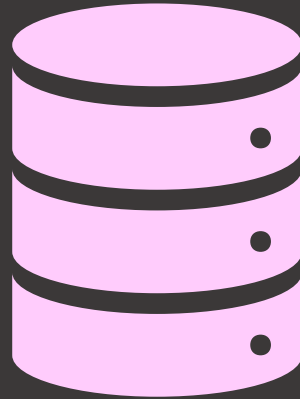
# Data Storage

Business Central Online

# Data Storage - Environments



**Production**



**3 Sandboxes**

# Data Storage - Environments



# Data Storage - Environments



Addl. subscription

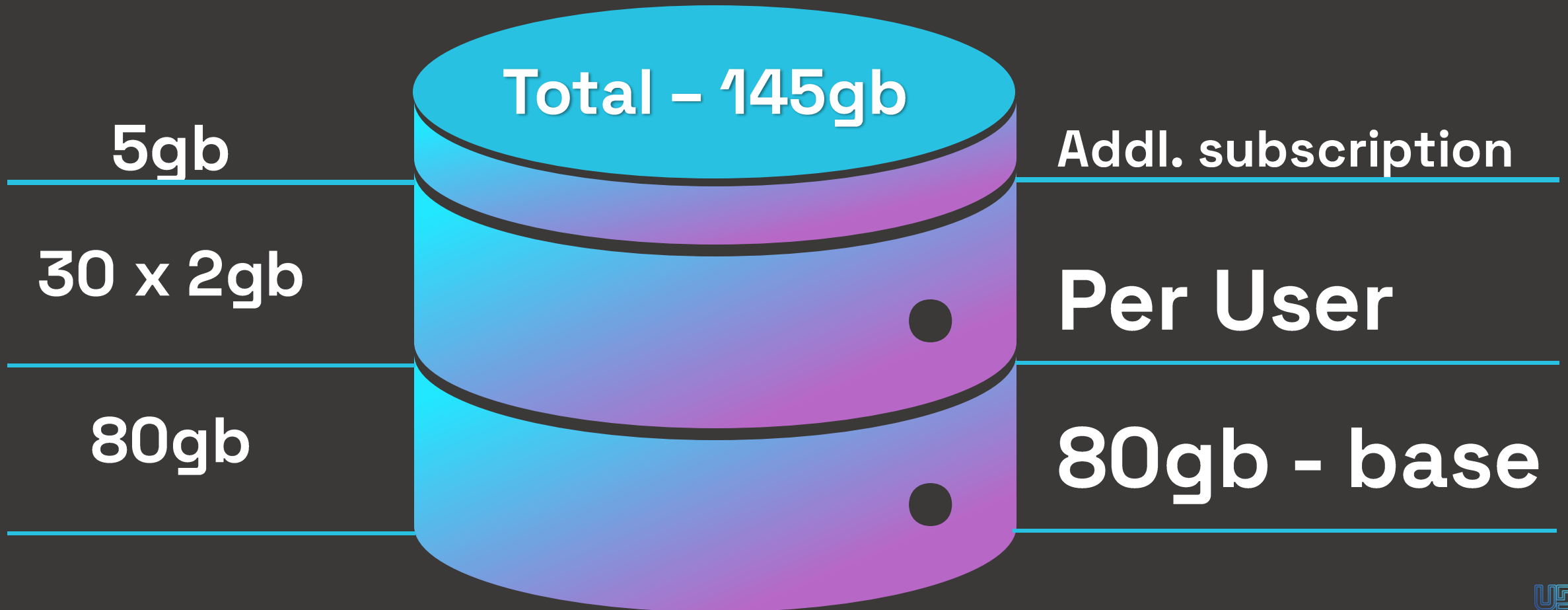
Addl. Prod. Env.

Per User

80gb - base

## Example:

30 Essentials Users – storage required 145gb



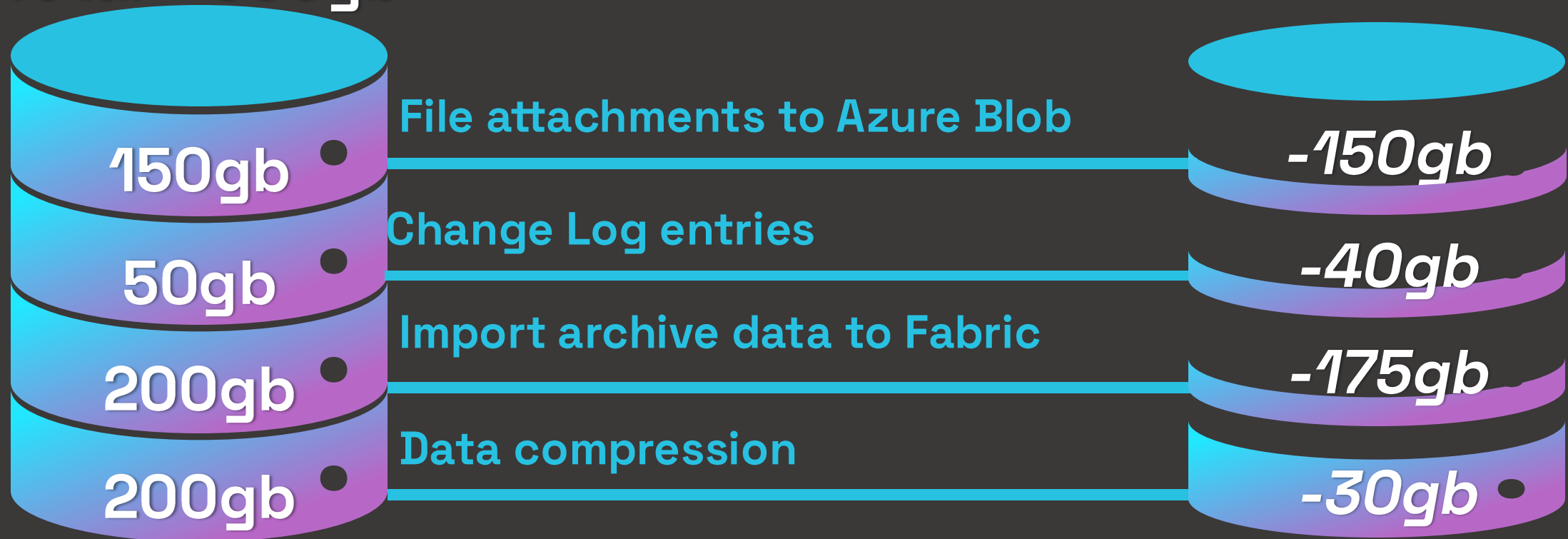
# Data Strategy

Business Central Online

- BC Online – part of a platform
- Scalable
- Storage capacity does not interrupt processing
- Data Retention Policies
- Azure Blob
- Fabric

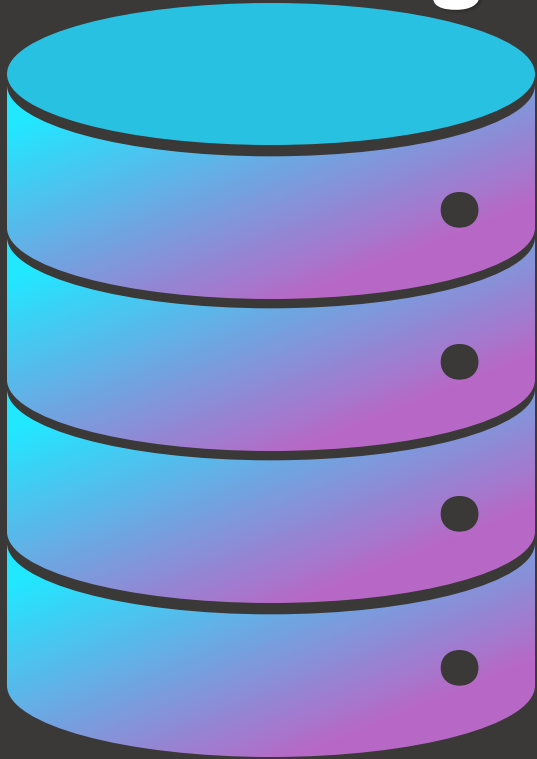
# Data Strategy – Online - Example

Total – 600gb



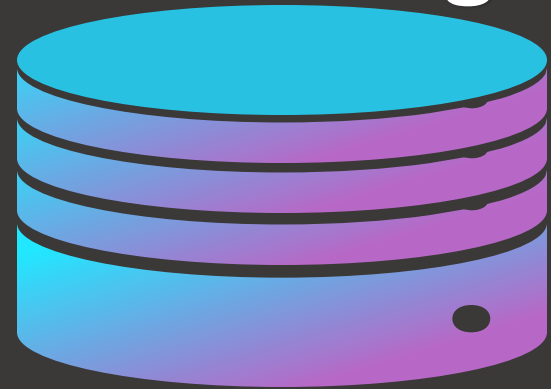
# Data Strategy – Online - Example

**Total – 600gb**



***Data reduction  
- 395gb***

**Total – 205gb**





# Bridge to the Cloud 2 Promotion (BTC2)

# BTC2 COUNTDOWN

**DAYS**

**HOURS**

**MINS**

**SECONDS**

**000**

**00**

**00**

**00**

# BTC2 COUNTDOWN

DAYS

HOURS

MINS

SECONDS

244

04

49

41

# BTC2

– 4 essential facts – 1 deadline!

40%  
Discount  
for 3 years!

Dual use  
rights

Payable 3  
years  
upfront

Based on  
BREP &  
Named  
users

**DEC 2025 or BREP renewal**

# Evergreen



[IT Professionals](#) · 3 min read

## Essential Clean-Up Guide for Partners: 2025 Release Wave 1

By [Predrag Maricic](#), Principal Software Engineering Manager  
[Aleksandar Totovic](#), Program Manager

6<sup>th</sup> February 2025

# Step Release

With the 2025 Release Wave 1 clean-up, Microsoft will adopt a clean-up cycle every **fifth** release, ensuring a smooth transition.

# 3 reasons why this matters

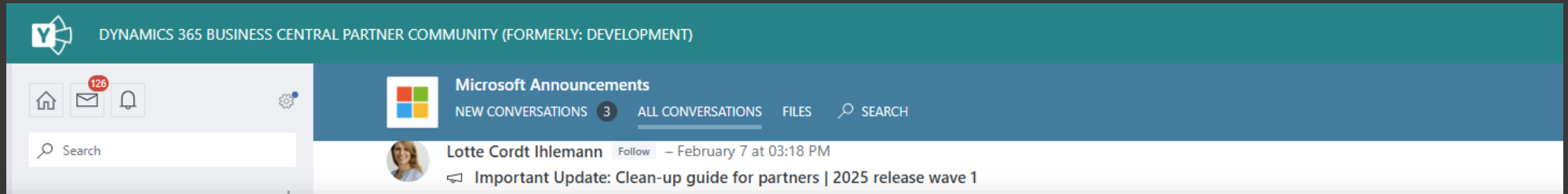
Improved  
database  
performance

Unified Base  
Applications

Easier to  
Maintain



# Health Warning!



As part of this release, we will remove deprecated tables and table fields in first party Business Central applications for the first time.

We have identified that some ISV and PTE (Per-Tenant Extension) applications may break as a result of this change, because they still rely on these deprecated constructs.

If these issues are not addressed in installed tenants, upgrades will initially be delayed and can ultimately lead to tenants being upgraded with broken applications being forcefully removed.

any issues as early as possible, otherwise these will fail when submitting close to the major release, e.g., 2025 release wave 1.

- Look out for notifications from Microsoft with early validation status to impacted per-tenant extensions and react in time to avoid any update delays or issues once the "2025 release wave 1" is released

How can we help?

# Evergreen

Always on the latest version - safely

# Evergreen Process



Update base  
BC app and  
add-ons in a  
new  
Sandbox



Fix breaking  
changes and  
issues  
arising



Support  
User  
Acceptance  
Testing



Agree  
Production  
upgrade  
date

Fixed price subscription

**Rate our session!**

